

# Get to know your new bins

The way you recycle is changing for the better.

[Optional QR Code]

## Glass Recycling

Empty and lightly rinse items.  
Firmly attach lids and caps (no pumps, sprays or droppers). Lids that can't be reattached go into the rubbish bin.  
Glass items must be loose when placed in the bin. Do not put them in plastic bags.



### ✓ Put in

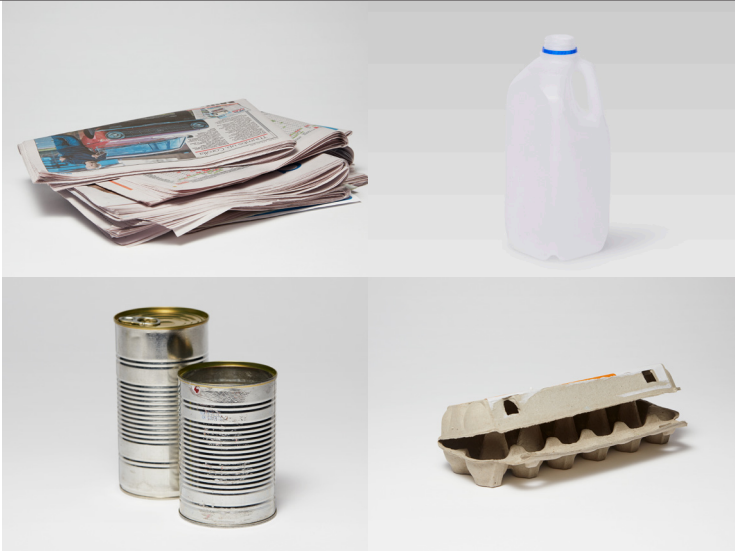
- ✓ Glass bottles for food and drinks such as beer, wine and olive oil bottles
- ✓ Glass jars for food such as pasta sauce and condiment jars
- ✓ Glass bottles and jars for medicine or toiletries

### ✗ Do not put in

- ✗ Loose lids and caps from bottles or jars
- ✗ Corks, pumps, sprays, droppers
- ✗ Crockery such as plates, dishes, saucers, mugs
- ✗ Drinking glasses, glass cookware
- ✗ Other glass items such as vases, light bulbs
- ✗ Plastic bags or plastic packaging of any kind
- ✗ Glass bottles and jars with non-glass items inside them such as cigarette butts, straws

## Mixed Recycling

Empty and lightly rinse items.  
Items must be loose when placed in the bin. Do not put them in plastic bags.  
Flatten cardboard before placing it in the bin.



- ✓ Accepted plastic bottles and containers
- ✓ Aluminium and steel tins, cans, foil
- ✓ Cardboard, cereal boxes, egg cartons
- ✓ Paper, newspapers, magazines, paper envelopes

- ✗ Clothing, shoes, textiles
- ✗ Coated or waxed cardboard
- ✗ Electronic waste and batteries
- ✗ Glass, crockery
- ✗ Plastic bags, other soft plastics
- ✗ Polystyrene (styrofoam)

## General Rubbish

Use this bin only for items that can't be reused or recycled.



- ✓ Broken glassware, crockery, mirrors
- ✓ Nappies, wet wipes
- ✓ Kitty litter, animal droppings
- ✓ Old clothing, shoes, or textiles that can't be repaired or donated
- ✓ Food and garden waste if you don't compost at home or don't have access to a community composting hub
- ✓ Loose jar lids and bottle caps, pumps, sprays, droppers

- ✗ Electronic waste and batteries
- ✗ Household chemicals
- ✗ Recyclable items
- ✗ Soil, building materials

# Get to know your new bins

The way you recycle is changing for the better.

[Optional QR Code]

## Glass Recycling

Empty and lightly rinse items.  
Firmly attach lids and caps (no pumps, sprays or droppers). Lids that can't be reattached go into the rubbish bin.  
Glass items must be loose when placed in the bin. Do not put them in plastic bags.



### ✓ Put in

- ✓ Glass bottles for food and drinks such as beer, wine and olive oil bottles
- ✓ Glass jars for food such as pasta sauce and condiment jars
- ✓ Glass bottles and jars for medicine or toiletries

### ✗ Do not put in

- ✗ Loose lids and caps from bottles or jars
- ✗ Corks, pumps, sprays, droppers
- ✗ Crockery such as plates, dishes, saucers, mugs
- ✗ Drinking glasses, glass cookware
- ✗ Other glass items such as vases, light bulbs
- ✗ Plastic bags or plastic packaging of any kind
- ✗ Glass bottles and jars with non-glass items inside them such as cigarette butts, straws

## Mixed Recycling

Empty and lightly rinse items.  
Items must be loose when placed in the bin. Do not put them in plastic bags.  
Flatten cardboard before placing it in the bin.



- ✓ Accepted plastic bottles and containers
- ✓ Aluminium and steel tins, cans, foil
- ✓ Cardboard, cereal boxes, egg cartons
- ✓ Paper, newspapers, magazines, paper envelopes

- ✗ Clothing, shoes, textiles
- ✗ Coated or waxed cardboard
- ✗ Electronic waste and batteries
- ✗ Glass, crockery
- ✗ Plastic bags, other soft plastics
- ✗ Polystyrene (styrofoam)

## General Rubbish

Use this bin only for items that can't be reused or recycled.



- ✓ Broken glassware, crockery, mirrors
- ✓ Nappies, wet wipes
- ✓ Kitty litter, animal droppings
- ✓ Old clothing, shoes, or textiles that can't be repaired or donated
- ✓ Food and garden waste if you don't compost at home or don't have access to a community composting hub
- ✓ Loose jar lids and bottle caps, pumps, sprays, droppers

- ✗ Electronic waste and batteries
- ✗ Household chemicals
- ✗ Recyclable items
- ✗ Soil, building materials