

# Start using your new bins from **[Insert: Month]**

## Collection dates

Your new services will commence after everyone in **[Insert: Council/ARMB area]** has received their new bins.

## Food Organics and Garden Organics (FOGO)

Collection starts **[Insert: Date]**

## Glass Recycling

Collection starts **[Insert: Date]**

Your collection days depend on where you live. To find out what they are, see our website **[Insert: URL]**

## Putting your bin out

Put your bin out the night before collection day. Bring it in when it's empty.

Place your bin on the kerb, close to the road. Make sure it faces towards the road (the handle should face your home).

Make sure that the bin lid is closed.

**Keep me!**  
Put this flyer on your fridge or where you can find it easily.

## Getting more out of recycling

By changing the way you sort your waste and recycling at home, we can do more with your recyclables.

**[Insert: 1-2 instances of where your council has utilised the recycling system to make something new]**

This way, valuable resources can be used again and again.

## More information

If you have any questions about the upcoming changes, visit our website, **[Insert: URL]**

### Or contact us:

**[Insert: council/ARMB name]**

**[Insert: email address]**

**[Insert: phone number]**

# Get to know your new bins

The way you recycle at home is changing for the better



Council logo goes here

**S** Sustainability  
Victoria

# Your bins

## Food and Garden Organics

Remove stickers from fruit skins.

[Adapt: You can use newspaper sheets or paper towels to wrap your food waste, or put it in a AS4736 certified industrial compostable bag.]



## ✓ Put in

- ✓ Out of date or mouldy food, including bread, pasta, rice
- ✓ Coffee grounds, loose leaf tea
- ✓ Dairy products such as cheese, butter
- ✓ Fruit and vegetable scraps
- ✓ Meat, seafood, bones, egg shells
- ✓ Leaves, plants, twigs, grass, weeds

## ✗ Do not put in

- ✗ Coffee pods, tea bags
- ✗ Kitty litter, animal droppings
- ✗ Large branches, tree stumps
- ✗ Liquids
- ✗ Nappies, wet wipes
- ✗ Plastic materials, including biodegradable or non-certified compostable plastics

## Glass Recycling

Empty and lightly rinse items.

Firmly attach lids and caps (no pumps, sprays or droppers). Lids that can't be reattached go into the rubbish bin.

Glass items must be loose when placed in the bin. Do not put them in plastic bags.



- ✓ Glass bottles for food and drinks such as beer, wine and olive oil bottles
- ✓ Glass jars for food such as pasta sauce and condiment jars
- ✓ Glass bottles and jars for medicine or toiletries

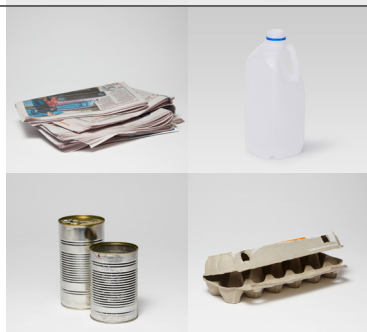
- ✗ Loose lids and caps from bottles or jars
- ✗ Corks, pumps, sprays, droppers
- ✗ Crockery such as plates, dishes, saucers, mugs
- ✗ Drinking glasses, glass cookware
- ✗ Other glass items such as vases, light bulbs
- ✗ Plastic bags or plastic packaging of any kind

## Mixed Recycling

Empty and lightly rinse items.

Items must be loose when placed in the bin. Do not put them in plastic bags.

Flatten cardboard before placing it in the bin.



- ✓ Accepted plastic bottles and containers
- ✓ Aluminium and steel tins, cans, foil
- ✓ Cardboard, cereal boxes, egg cartons
- ✓ Paper, newspapers, magazines, paper envelopes

- ✗ Clothing, shoes, textiles
- ✗ Coated or waxed cardboard
- ✗ Electronic waste and batteries
- ✗ Glass, crockery
- ✗ Plastic bags, other soft plastics
- ✗ Polystyrene (styrofoam)

## General Rubbish

Use this bin only for items that can't be reused or recycled.



- ✓ Broken glassware, crockery, mirrors
- ✓ Nappies, wet wipes
- ✓ Kitty litter, animal droppings
- ✓ Old clothing, shoes, or textiles that can't be repaired or donated
- ✓ Loose jar lids and bottle caps, pumps, sprays, droppers

- ✗ Electronic waste and batteries
- ✗ Food and garden waste
- ✗ Household chemicals
- ✗ Recyclable items
- ✗ Soil, building materials

For a full list of what you can and can't put into each bin, visit [\[Insert: URL\]](#)

# Your bins

## Food and Garden Organics

Remove stickers from fruit skins.

[Adapt: You can use newspaper sheets or paper towels to wrap your food waste, or put it in a AS4736 certified industrial compostable bag.]



## ✓ Put in

- ✓ Out of date or mouldy food, including bread, pasta, rice
- ✓ Coffee grounds, loose leaf tea
- ✓ Dairy products such as cheese, butter
- ✓ Fruit and vegetable scraps
- ✓ Meat, seafood, bones, egg shells
- ✓ Leaves, plants, twigs, grass, weeds
- ✓ Hay or straw

## ✗ Do not put in

- ✗ Coffee pods, tea bags
- ✗ Kitty litter, animal droppings
- ✗ Large branches, tree stumps
- ✗ Liquids
- ✗ Nappies, wet wipes
- ✗ Plastic materials, including biodegradable or non-certified compostable plastics
- ✗ Dirt, sand or soil
- ✗ Treated or coated wood

## Mixed Recycling

Empty and lightly rinse items.

Items must be loose when placed in the bin. Do not put them in plastic bags.

Flatten cardboard before placing it in the bin.



- ✓ Accepted plastic bottles and containers
- ✓ Aluminium and steel tins, cans, foil
- ✓ Cardboard, cereal boxes, egg cartons
- ✓ Paper, newspapers, magazines, paper envelopes
- ✓ Glass bottles and jars such as wine and beer bottles, pasta sauce and condiment jars

- ✗ Broken glass, crockery, drinking glasses
- ✗ Clothing, shoes, textiles
- ✗ Coated or waxed cardboard
- ✗ Electronic waste and batteries
- ✗ Plastic bags, other soft plastics
- ✗ Polystyrene (styrofoam)

## General Rubbish

Use this bin only for items that can't be reused or recycled.



- ✓ Broken glassware, crockery, mirrors
- ✓ Nappies, wet wipes
- ✓ Kitty litter, animal droppings
- ✓ Old clothing, shoes, or textiles that can't be repaired or donated
- ✓ Loose jar lids and bottle caps, pumps, sprays, droppers

- ✗ Electronic waste and batteries
- ✗ Food and garden waste
- ✗ Household chemicals
- ✗ Recyclable items
- ✗ Soil, building materials

For a full list of what you can and can't put into each bin, visit [\[Insert: URL\]](#)

# Your bins

## Glass Recycling

Empty and lightly rinse items.

Firmly attach lids and caps (no pumps, sprays or droppers). Lids that can't be reattached go into the rubbish bin.

Glass items must be loose when placed in the bin. Do not put them in plastic bags.



## ✓ Put in

- ✓ Glass bottles for food and drinks such as beer, wine and olive oil bottles
- ✓ Glass jars for food such as pasta sauce and condiment jars
- ✓ Glass bottles and jars for medicine or toiletries

## ✗ Do not put in

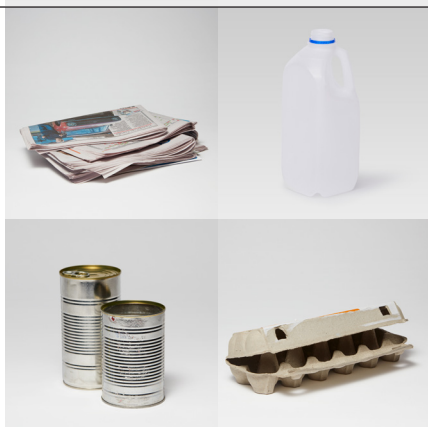
- ✗ Loose lids and caps from bottles or jars
- ✗ Corks, pumps, sprays, droppers
- ✗ Crockery such as plates, dishes, saucers, mugs
- ✗ Drinking glasses, glass cookware
- ✗ Other glass items such as vases, light bulbs
- ✗ Plastic bags or plastic packaging of any kind
- ✗ Glass bottles and jars with non-glass items inside them such as cigarette butts, straws

## Mixed Recycling

Empty and lightly rinse items.

Items must be loose when placed in the bin. Do not put them in plastic bags.

Flatten cardboard before placing it in the bin.



- ✓ Accepted plastic bottles and containers
- ✓ Aluminium and steel tins, cans, foil
- ✓ Cardboard, cereal boxes, egg cartons
- ✓ Paper, newspapers, magazines, paper envelopes

- ✗ Clothing, shoes, textiles
- ✗ Coated or waxed cardboard
- ✗ Electronic waste and batteries
- ✗ Glass, crockery
- ✗ Plastic bags, other soft plastics
- ✗ Polystyrene (styrofoam)

## General Rubbish

Use this bin only for items that can't be reused or recycled.



- ✓ Broken glassware, crockery, mirrors
- ✓ Nappies, wet wipes
- ✓ Kitty litter, animal droppings
- ✓ Old clothing, shoes, or textiles that can't be repaired or donated
- ✓ Food and garden waste if you don't compost at home or don't have access to a community composting hub
- ✓ Loose jar lids and bottle caps, pumps, sprays, droppers

- ✗ Electronic waste and batteries
- ✗ Household chemicals
- ✗ Recyclable items
- ✗ Soil, building materials

For a full list of what you can and can't put into each bin, visit [\[Insert: URL\]](#)